

Potential sources and measured concentrations of VOCs in Balikesir ambient atmosphere

Efdal YALÇIN¹, Lokman Hakan TECER², Sema YURDAKUL^{3*} and Gürdal TUNCEL¹

¹Middle East Technical University, Environmental Engineering Department, Ankara, Turkey.

²Namik Kemal University, Corlu Faculty of Engineering, Environmental Engineering Department, Tekirdag, Turkey

³Suleyman Demirel University, Environmental Engineering Department, Isparta, Turkey.

*Corresponding author; email: semayurdakul@sdu.edu.tr

Received: November 18, 2018; accepted: December 24, 2019

RESUMEN

La evaluación de compuestos orgánicos volátiles (COV) se ha convertido en un importante campo de interés en la contaminación atmosférica. Este estudio cuantifica y caracteriza los niveles ambientales y la distribución espacial de los COV en las zonas urbanas y rurales de la ciudad de Balikesir. Para estas evaluaciones, el muestreo pasivo de COV se realizó en aproximadamente 50 lugares en la ciudad de Balikesir y sus alrededores. Se monitorearon regularmente 25 COV, y las muestras se analizaron con el sistema GC-FID. Los muestreos se llevaron a cabo en periodos de siete días durante marzo y agosto de 2010. Se encontró que las concentraciones medias de \sum COV fueron de 67 y 51 $\mu\text{g m}^{-3}$ en las temporadas de invierno y verano, respectivamente. Las concentraciones medias de benceno, tolueno, etilbenceno, m,p-xileno y o-xileno fueron de 2.6, 11, 1.30, 1.80 y 0.73 $\mu\text{g m}^{-3}$, respectivamente. Aunque hubo algunos cambios en las concentraciones de grupos de COV entre las campañas de verano e invierno, las diferencias no fueron excesivas. Las proporciones de invierno a verano de los compuestos objetivo variaron de 0.2 (1,2,4-trimetilbenceno) a 9 (hexano). La mayoría de los compuestos objetivo tienen concentraciones más altas en invierno. Solo algunos COV, incluidos el n-propilbenceno, el 1,2,4-trimetilbenceno, el 1-undeceno y el 1,2,4-triclorobenceno tienen concentraciones más altas en verano. La distribución espacial de COV demostró que las carreteras son puntos críticos para las concentraciones de COV. Las fuentes que contribuyen a la carga total de VOC en la atmósfera de Balikesir son la planta de tratamiento de agua potable, las emisiones de solventes industriales de las aplicaciones de pesticidas e insecticidas en la agricultura, y las emisiones del tráfico.

ABSTRACT

The assessment of volatile organic compounds (VOCs) has become an important field of interest in atmospheric pollution. This study quantifies and characterizes the ambient levels and spatial distribution of VOCs in urban and rural areas of Balikesir city, Turkey. For these assessments, passive sampling of VOCs performed at approximately 50 locations in and around the city of Balikesir. Twenty-five VOCs were regularly monitored and analyzed with the GC-FID system. The sampling periods were carried out for seven-day periods during March and August 2010. In the study, mean \sum VOC concentrations were found to be as high 67 and 51 $\mu\text{g m}^{-3}$ for the winter and summer seasons, respectively. Median concentrations of benzene, toluene, ethylbenzene, m,p-xylene and o-xylene were 2.6, 11, 1.30, 1.80 and 0.73 $\mu\text{g m}^{-3}$, respectively. Although there were some changes between concentrations of VOC groups between the summer and winter campaigns, differences were not dramatic. Winter-to-summer ratios of the target compounds ranged from 0.2 (1,2,4-trimethylbenzene) to 9 (hexane). Most of the target compounds have higher concentrations in winter. Only few VOCs, including n-propylbenzene, 1,2,4-trimethylbenzene, 1-undecene and 1,2,4-trichlorobenzene have higher concentrations in summer. Spatial distribution of VOCs demonstrated that the roads are hot spots for measured VOC

concentrations. The drinking water treatment plant, industrial solvent emissions from pesticide and insecticide applications in agriculture, and emissions from traffic were the sources that contribute to total VOC load in the Balıkesir atmosphere.

Keywords: Source apportionment, VOCs, PMF, urban atmosphere.

1. Introduction

VOCs have become significant pollutants in the urban atmosphere due to their effects both on human health and atmospheric chemistry (Kim et al., 2012). Furthermore, VOC levels were also found to be strongly related with photochemical smog and ground level ozone concentrations (Guo et al., 2011). Therefore, necessary efforts should be made to identify levels and sources of VOCs in urban atmosphere and obligatory precautions against these compounds should be taken.

Like in many other developing countries, air pollution is considered a serious problem in many Turkish cities. Although the Ministry of Environment and Forestry has established air quality stations which monitor criteria pollutants (i.e., PM, CO, NO_x, SO₂, and O₃) in 81 provinces of Turkey, there are only a small number of studies about organic compounds conducted in this country (Muezzinoglu et al., 2001; Cetin et al., 2003; Elbir et al., 2007; Im et al., 2008; Özden et al., 2008; Pekey and Arslanbaş, 2008; Civan et al., 2011; Demir et al., 2011; Pekey and Yilmaz, 2011; Kara and Aydın, 2013; Kuntasal et al., 2013; Demirel et al., 2014; Öztürk et al., 2015; Artun et al., 2017; Yurdakul et al., 2017). Furthermore, these studies mainly focused on highly populated and industrialized cities, thus they are limited. Therefore, studies on levels, sources, seasonal and diurnal variations and ozone formation potentials of VOCs in smaller cities of Turkey are absent.

The main purpose of the study is to investigate ambient VOC levels in Balıkesir both in rural areas including a dam where the city's drinking water is supplied and urban areas in different seasons, to find out sources of these pollutants and to understand the factors affecting the spatial distribution of VOCs.

2. Materials and methods

2.1 Study site

Balıkesir is a mid-sized city located in the north-western part of Turkey between 39.55° N and 27.73° E

(Fig. 1). It has a population of 1 150 000, of which approximately 700 000 residents are urbanized. The city is very close to popular summer resort areas in Turkey. The highway that connects Istanbul to Izmir, which has heavy traffic, particularly during summer, passes through Balıkesir.

Although there are some small-scale industrial activities, such as metal casting and production of electrical utensils, Balıkesir cannot be considered as a heavily industrialized city. Its main income is from agriculture and agriculture-based industries. Because of its geographical location, Balıkesir's climate ranges between Mediterranean climate with very hot summers and relatively mild winters and the Anatolian plateau climate, which has very cold winters and mild summer conditions. Annual precipitation is 545 mm and annual average temperature is 14.5 °C (Tağıl, 2007).

Locations for sampling stations were selected using a grid system, which covers urban and rural areas. The latter includes the İkiçetepeler reservoir, which provides drinking water for the city. At first, stations were situated at the corners of the grid system, but then, by visual inspection, some of these were moved to more important locations to increase their density in urban and industrial areas, as well as the reservoir surroundings. The final positions of sampling locations are given in Figure 1. These 50 stations were grouped as residential, traffic and background. There were 14 "residential" stations, located in the urban area, but not very close to major roads. "Traffic" stations were located in the immediate vicinity of roads inside the city and around the Izmir highway, outside the city. There were 13 traffic stations, five of which were located in the urban and eight in the proximity of the İzmir highway. Twenty-three "background" stations were located outside the city, of which eight were situated around İkiçetepeler dam lake. The remaining 15 background stations were located between the city and the lake.

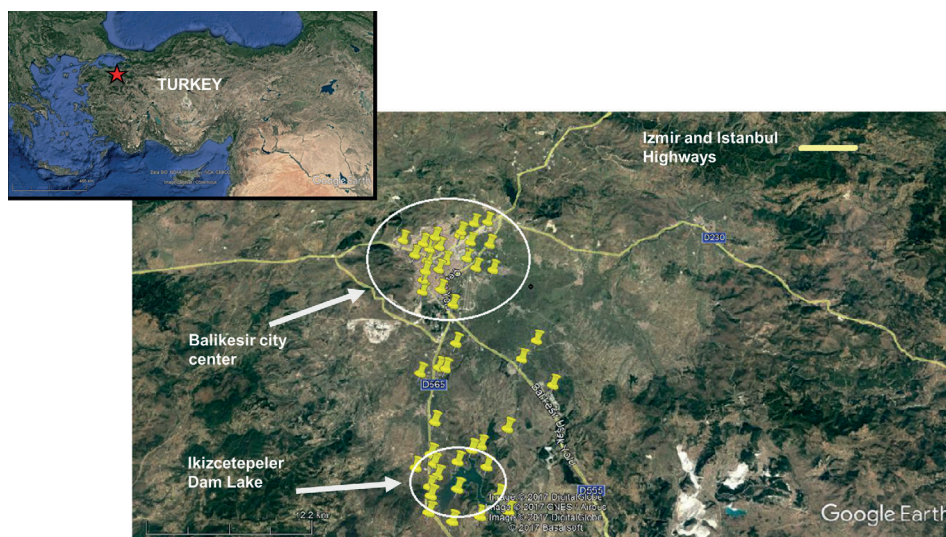


Fig. 1. Location of the sampling points (the location of Balikesir is highlighted on the upper left corner).

2.2 Sampling

Samples were collected using stainless steel passive sampling tubes with 0.5 cm internal diameter, 9 cm long (Gradko), filled with 60/80 mesh Tenax TA adsorbent (Supelco). Sampling tubes were conditioned in a conditioning oven at 300 °C for 4 h. During the conditioning, high purity nitrogen was passed through the tubes, at a flowrate of 100 ml min⁻¹. Extensive measures were taken to avoid contamination during storage of tubes before sampling. Both ends of the tubes were sealed using stainless steel screw caps and tubes were stored in sealed test tubes containing silica-gel and activated charcoal. Test tubes containing sampling tubes were stored at -10 °C until sampling. At the start of the sampling, the top screw cap was replaced with a diffusion cap. Passive sampling tubes were exposed for one week, because our earlier studies demonstrated that sample losses start to be significant for exposures longer than one week (Civan et al., 2011).

Two sampling campaigns were conducted during 2010. The first one from March 10-17 and the second one from August 13-20, to cover both winter and summer conditions. During the study, a total of 103 tubes were deployed (50 for the winter and 53 for the summer sampling), and 100 of them were retrieved. Temperature varied from 2 to 14 °C during the winter campaign, with an average value of 8° C. There was no precipitation during this time. Minimum and maximum temperatures were 19 and 33 °C during the

summer campaign with an average value of 25 °C. No precipitation was recorded during the summer campaign.

2.3 Analysis of the collected samples

Passive samples were analyzed using a gas chromatographer equipped with a flame ionization detector (FID) (HP, Agilent Technologies, model 6990). Samples were introduced in the GC-FID system using a thermal desorption unit (Markes International, UK), which was equipped with a Deans switch. Compounds lighter than hexane go through the alumina plot capillary column (J&W, Palo Alto, California) and compounds with molecular weights higher than that of hexane were directed to the DB1 column (J&W, Palo Alto, California). The system works by desorbing analytes at approximately 300 °C and collecting them in a cold trap at -15 °C. Operating parameters of the GC-FID system, such as desorption temperature and time, cold trap temperature and time, flow rates through columns and column temperatures were optimized before the campaigns.

An external standard method was used for quantification of target compounds and the system was calibrated with a standard gas mixture containing 148 VOCs with carbon numbers between 2 and 12, which was obtained from the Environment Technology Center, Environment Canada. Concentrations of the compounds in the standard mixture varied between 2 and 20 µg m⁻³. Although there were 148 VOCs in

the calibration mixture, 25 of them were regularly detected in collected samples. Only a small group of VOCs were detected in passive samples, partly because concentrations of some target VOCs were low in the atmosphere, but more importantly, because VOCs with carbon number < 5 were not efficiently collected by the adsorbent used in samplers (Tenax). The retention time of VOCs was identified both by using homemade mixtures of smaller number of VOCs, such as aromatics, olefins, paraffin and BTEX (benzene, toluene, ethylbenzene and xylene) liquid mixtures, and standard gas mixture.

The stability of the calibration curve was checked every analysis day by injecting one of the mid-point standards. The precision of the measurements was monitored by replicate measurements of low-level standards. Relative standard deviations for all VOCs measured in this study were $< 10\%$. In addition to precision tests and calibration checks, laboratory and field blanks and desorption efficiency were routinely monitored as a part of the QA/QC program. Break-through test was also performed at the beginning of the study. Furthermore, the relative standard deviation among the co-located seven passive sampling tubes was always found to be less than 5% for most of the target compounds.

The field blank tubes were filled and conditioned with the same procedures used in filling and conditioning sampling tubes. Masses of VOCs measured in all field blanks were $< 10\%$ of average masses of VOCs collected on sample tubes. For example, the average benzene concentration in samples was $2.2 \mu\text{g m}^{-3}$. The highest benzene blank value was $0.012 \mu\text{g m}^{-3}$. A similar difference was also observed in the other VOCs. Desorption efficiency of the analysts ranged from 89 to 100% with an average value of 96%.

The method detection limit (MDL) for each VOC was the concentration corresponding to 3σ obtained from seven replicate measurements of a blank tube. Detection limits of individual VOCs varied between 0.04 and $0.26 \mu\text{g m}^{-3}$ for naphthalene and 1,2,4-trimethylbenzene, respectively. The detection limit values of all VOCs are orders of magnitude smaller than the concentrations found in samples, indicating that VOC concentrations close to detection limit values are not a serious source of uncertainty in this study. Detection limits and performance parameters of the 25 target VOCs are given in Table I.

3. Results and discussion

3.1 Data

A statistical summary of the 25 target VOCs, which were measured in about $> 70\%$ of the samples, is given in Table II. As in most studies, toluene is the most abundant VOC in the atmosphere of Balıkesir. Its concentration varied between $86 \mu\text{g m}^{-3}$ at the urban center and $1.4 \mu\text{g m}^{-3}$ at a background station.

During the summer season, approximately 46% of SVOC concentration was comprised of aromatics and 33, 12 and 10% of the total VOC concentration were comprised by halogenated compounds, alkanes and alkenes, respectively. In the winter campaign, the contributions of aromatics, halogenated compounds, alkanes and alkenes were 53, 18, 17, and 11%, respectively. Although there were some changes between concentrations of VOC groups between the summer and winter campaigns, differences were not dramatic, with the exception of halogenated compounds in summer and winter concentrations. Both the percent contribution to the VOC profile and the absolute concentrations of halogenated VOCs, increased by approximately a factor of 2 during the summer campaign. This seasonal variation is not entirely surprising, because halogenated hydrocarbons are widely used as degreasers and solvents in industry (Toyoda et al., 2016), thus their concentrations observed in the summer were probably due to enhanced evaporation from their sources at higher ambient temperatures.

3.2 Comparison with the literature

Concentrations of the BTEX compounds measured in this work and in passive sampling campaigns in other cities in Turkey and Europe are given in Table III. The comparison was limited to BTEX compounds, because other VOCs are not reported as frequently in literature.

BTEX concentrations measured in this study are comparable to the corresponding concentrations measured in European cities, but lower than average concentrations reported for other Turkish cities. In most VOC studies average concentrations strongly depend on distances of sampling stations to VOC sources, particularly to roads. Since average BTEX concentrations in Table III are all generated from passive sampling campaigns and include data from 9-50 different locations in those cities, the reported concentrations are expected to be representative for

Table I. Detection limits and performance parameters of the 25 target VOCs.

Compound	MDL ($\mu\text{g m}^{-3}$)	Linearity	Precision (%)	Recovery (%)
n-hexane	0.13	0.997	10.77	92
Methylcyclopentane	0.11	0.996	4.74	90
Benzene	0.09	0.994	4.05	91
Cyclohexane	0.13	0.997	7.01	94
2-methylhexane	0.13	0.990	12.38	96
3-methylhexane	0.09	0.994	5.16	99
c-3-heptene	0.13	0.994	3.44	91
Methylcyclohexane	0.04	0.994	4.69	97
Toluene	0.24	0.993	4.57	91
Octane	0.16	0.996	9.74	97
Ethylbenzene	0.16	0.993	5.91	99
m,p-xylene	0.11	0.992	11.58	91
Styrene	0.10	0.998	13.18	95
o-xylene	0.17	0.992	8.07	91
Nonane	0.04	0.989	11.34	100
n-propylbenzene	0.09	0.990	6.16	97
Camphene	0.12	0.997	3.85	93
1-decene	0.09	0.993	6.77	99
1,2,4-trimethylbenzene	0.26	0.992	7.39	100
Benzylchloride	0.21	0.993	4.95	91
n-decane	0.13	0.990	7.29	91
1,2,3-trimethylbenzene	0.13	0.990	7.79	89
1-undecane	0.09	0.991	7.99	91
1,2,4-trichlorobenzene	0.21	0.998	9.14	93
Naphthalene	0.04	0.996	17.98	95

MDL: method detection limit.

the cities. Similarities in concentrations measured in Turkish cities with those reported in various European and North American cities were also reported in earlier studies with active sampling (Civan et al., 2011, 2015; Kuntasal et al., 2013; Pekey et al., 2015; Yurdakul et al., 2017). The lower concentrations of BTEX compounds measured in this work, with respect to those reported for other Turkish cities like Ankara and Bursa, is due to the fairly large number of background stations used in this work.

3.3 Seasonal variations of VOCs

As mentioned above, passive sampling campaigns in this study were performed during March and August. The March campaign was considered as winter while the August campaign was considered as summer for two reasons. Firstly, in most Turkish cities the heating season officially ends on April 15 and starts on October 15. The use of heating units is not allowed

between these two dates. This was a rule stemming from the 1970s and 1980s, when most cities in the country suffered from very heavy air pollution from coal combustion due to space heating. Secondly, in most parts of Turkey 20% of the annual rainfall occurs between April and October and 80% occurs between October and April. With such distribution of precipitation and timing of heating emissions, selecting the period between April and October as summer and the rest of the year as winter was appropriate to highlight the role of precipitation and heating-related emissions on measured concentrations of VOCs. Mean $\sum\text{VOC}$ concentrations were 67 and 51 $\mu\text{g m}^{-3}$ for the winter and summer seasons, respectively. Since Balikesir is not an industrial city, light and heavy-duty traffic is the dominating source for VOCs. In cities located in central Anatolia, traffic emissions can be lower in summer due to the migration of population to coastal areas. In Ankara, for example, the number of vehicles

Table II. Statistical summary of the most abundant species ($\mu\text{g m}^{-3}$).

Compound	Winter		Summer	
	Mean	Range	Mean	Range
n-hexane	1.64	0.21-14.44	0.19	0.05-0.95
Methylcyclopentane	1.11	0.23-3.68	0.39	0.05-1.62
Benzene	4.50	1.72-14.77	0.79	0.29-1.67
Cyclohexane	1.57	0.48-3.57	0.41	0.13-1.25
2-Methylhexane	2.12	1.09-4.89	0.47	0.16-1.75
3-Methylhexane	1.12	0.30-2.57	0.30	0.04-0.99
c-3-Heptene	0.22	0.06-0.64	0.10	0.05-0.25
Methylcyclohexane	0.18	0.07-0.45	0.12	0.06-0.25
Toluene	15.77	2.96-85.90	6.00	1.43-40.01
Octane	0.94	0.21-4.70	0.61	0.09-1.77
Ethylbenzene	1.32	0.26-8.18	1.26	0.05-16.74
m,p-xylene	5.05	0.66-37.94	2.55	0.08-13.77
Styrene	2.48	0.45-8.40	1.49	0.17-5.34
o-xylene	0.89	0.15-3.33	0.57	0.08-1.86
Nonane	0.97	0.27-3.12	0.63	0.05-3.74
n-propylbenzene	1.25	0.16-7.38	2.46	0.40-13.11
Camphene	3.66	0.10-13.95	3.18	0.08-17.14
1-decene	2.74	0.46-7.80	2.12	0.06-9.82
1,2,4- trimethylbenzene	0.57	0.21-1.45	1.81	0.19-14.45
n-decane	0.43	0.07-1.53	0.21	0.05-1.48
Benzylchloride	1.33	0.31-11.61	0.32	0.06-1.45
1,2,3-trimethylbenzene	0.56	0.18-2.43	0.20	0.06-0.57
1-undecene	3.65	1.10-10.61	8.18	0.21-74.87
1,2,4- trichlorobenzene	11.33	1.35-74.05	16.20	0.72-88.01
Naphthalene	1.66	0.39-6.42	0.45	0.06-1.09

Table III. Comparison of average BTEX concentrations ($\mu\text{g m}^{-3}$) in literature.

	This study	Bursa, Turkey ¹	İzmir, Turkey ²	Kocaeli, Turkey ³	Ioannina, Greece ⁴	Dunkerque, France ⁵	Navarre, Spain ⁶
Benzene	2.6	5.2	6.8	2.3	12	2.8	1.9
Toluene	11	24	14	35	41	13	6.0
Ethylbenzene	1.3	3.6	2.6	9.7	-	2.2	1.4
m,p-xylene	3.8	9.9	-	37	-	3.4	4.6
o-xylene	0.73	1.4	-	12	-	2.6	1.7

¹Civan, 2010; ²Elbir et al., 2007; ³Pekey and Yılmaz, 2011; ⁴Pilidis et al., 2005; ⁵Roukos et al., 2009;

⁶ Parra et al., 2009.

on the roads decreases by 30% during June to August (Kuntasal et al., 2013). However; since Balıkesir is on the highway that connects the Marmara region, which includes Istanbul (with a population of approximately 20 million) to the most popular coastal holiday resorts in Turkey, traffic-related emissions are expected to increase during summer.

Thus, the temporal variability in traffic-related emissions cannot explain the observed high VOC concentrations in winter months. An explanation could be the more extensive photochemical destruction of VOCs during the summer (Kuntasal, 2005). However, it should be noted that some of the VOCs, particularly those that are intermediates in oxidation

mechanisms, are also produced faster during the summer. The most likely source for observed high winter concentrations is the seasonal variation in meteorology, particularly regarding the mixing height, which depicts a well-defined seasonal variation with approximately a factor of 2 to 3 higher values in summer (Civan, 2010). Since the mixing height defines the volume in which pollutants are dispersed, higher mixing height results in larger volumes, which in turn result in the dilution of VOCs and lower concentrations in summer. In addition to mixing height, wind speed, wind direction, temperature and atmospheric stability also control the dispersion and reactivity of organic compounds in the atmosphere (Jones et al., 1998).

In this study, during both sampling campaigns, northerly winds were frequently observed. The prevailing wind directions for the first and second sampling campaigns were North with wind frequency 52% and North with wind frequency 60%, respectively. Therefore, northerly winds were found to be very effective for the ventilation of Balikesir. Average wind speeds for the first and second campaigns were 2.33 and 3.85 m s^{-1} , respectively. Lower concentrations are frequently observed with increasing wind speed (Wang et al., 2009; Ojiodu and Uwadia, 2013). Accordingly, higher wind speeds during August produced stronger ventilation in Balikesir and decreased the concentrations of target VOCs as reported for other cities (Filella and Peñuelas, 2006).

Different winter-to-summer concentration ratios of VOCs, which vary between 9 for hexane to 0.2 for 1,2,4-trimethylbenzene (Fig. 2), also indicate that

meteorology is not the only factor. Most of the 25 target VOCs measured have higher concentrations in winter; only a few, including n-propylbenzene, 1,2,4-trimethylbenzene, 1-undecene and 1,2,4-trichlorobenzene have higher concentrations in summer. VOCs with winter-to-summer ratios close to or smaller than 1 are those with higher source strength in summer, whose likely source is solvent use, since many VOCs are used as solvents or in the production of these. Enhanced evaporation of solvents in summer reduces the winter-to-summer concentration ratios of VOCs, which is at least partly due to solvent use.

Toluene to benzene (T/B) and xylene to ethylbenzene (X/E) are widely used in literature to identify emission sources of organics and the photochemical age of air parcels, respectively (al-Harbi, 2019). For traffic emissions, the T/B ratio is between 1.5 and 3; however, the ratio increases with contributions from non-traffic sources (Miller et al., 2011). In winter and summer, mean T/B ratios were found to be 3.497 ± 4.357 and 7.819 ± 9.088 , respectively. Calculated T/B ratios suggest persistent local emissions of toluene. Furthermore, the mean T/B ratio in the summer is higher than the mean T/B ratio in winter by a factor of 2. Therefore, there is a significant contribution of non-traffic sources on the measured VOC levels in Balikesir during the summer, whereas vehicular emissions are a more important contribution in winter. The calculated mean X/E ratios were 3.351 and 2.790 ± 5.151 for the winter and summer seasons, respectively. Lower ratios of X/E are found at a receptor which is far from the sampling location

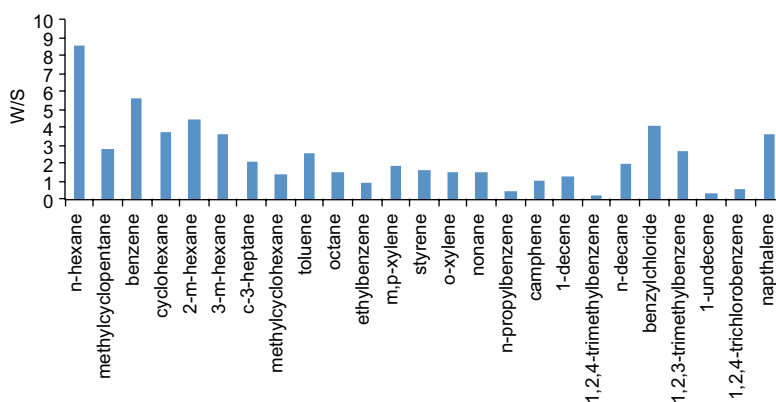


Fig. 2. Winter/summer (W/S) ratios of the most abundant 25 VOC compounds.

(Zhang et al., 2008). Therefore, mean X/E ratios indicate fresh emissions from traffic in Balıkesir.

3.4 Spatial distribution of VOCs

The spatial distribution of VOC concentrations can provide preliminary information on their sources. Therefore, distribution maps were prepared for measured VOCs to identify their sources in Balıkesir. Maps for BTEX compounds for the summer and winter campaigns are given in Figures 3 and 4, respectively.

Distribution maps were prepared by interpolation, using GIS software (MapInfo, v. 10.0). Maps for other VOCs were prepared, but not included in the figures, because their distributions were not very different from those shown for BTEX. The most obvious feature, which was observed in all distribution maps, is higher concentrations of VOCs in stations located within the city. This is not surprising due to strong traffic and non-traffic VOC sources in the urban area. High VOC concentrations were observed at the industrial area, which is located in the northeast corner of the city. Another interesting point in the BTEX distributions shown in Figures 3 and 4 are the high concentrations of BTEX concentrations in stations around the İkizcetepeler reservoir. Probably due to traffic activity on the Istanbul-Izmir highway, high BTEX concentrations were obtained around the reservoir.

During the experimental design, locations of sampling points were carefully selected, to be in one of three microenvironments, namely residential, traffic and background. Median concentrations of measured VOCs in these three microenvironments were calculated and given in Table IV. Differentiation of traffic and non-traffic sources is difficult in the city because light-duty traffic activity occurs in all parts of the city, including residential areas. Traffic microenvironment in this study refers to VOC concentrations measured along the Istanbul-Izmir highway. Background stations are the ones that are not in close proximity to the city or the highway. For most of the VOCs highest median concentrations are observed in residential stations, which are followed by traffic stations. The lowest concentrations were measured at background stations for all VOCs without any exception. This pattern is consistent with the VOC distributions depicted in Figures 3 and 4,

and demonstrate that urban emissions from traffic and non-traffic sources dominate measured VOC concentrations in the study area.

It is interesting to note that concentrations of a few heavy VOCs, including nonane, 1,2,4-trimethylbenzene and 1,2,4-trichlorobenzene are higher in traffic stations around the highway than in residential stations. Nonane is an accepted tracer for diesel exhaust (Cai et al., 2010; Wu et al., 2016), while 1,2,4-trimethylbenzene is primarily used as a gasoline additive. It is also used as a solvent during other industrial activities such as production of paints, pesticides, cleaners and printing inks (Parao, 2012). The highway that connects Istanbul to Izmir has a dense activity of both heavy (trucks and busses) and light-duty vehicles. Since heavy duty vehicles have limited access to roads in the city, higher concentrations of VOCs emitted from diesel engines are expected at the sampling points around the highway. Industrial or fossil fuel combustions are the main sources of 1,2,4-trichlorobenzene in the atmosphere (Qadoumi, 2016). On the other hand, 1,2,4-trichlorobenzene is also used as herbicide intermediate and insecticide (Ramamoorthy and Ramamoorthy, 1997; Sullivan and Krieger, 2001). Probably due to agricultural activities around the Istanbul-Izmir highway, high 1,2,4-trichlorobenzene concentrations were detected during the study. VOCs other than nonane, 1-decene, 1,2,4-trimethylbenzene and 1,2,4-trichlorobenzene are also emitted from diesel or gasoline exhaust, but their non-traffic sources at the urban area dominate, resulting in higher concentrations in the residential group.

3.5 Positive matrix factorization results

Positive matrix factorization (PMF) v.5 from the US Environmental Protection Agency was applied to identify the possible sources of measured VOC concentrations in Balıkesir, and a methodology developed by Pollisar et al. (2001) was used to generate uncertainties for each datum. Briefly, when a data point is above the detection limit concentration value, it is directly used and its uncertainty is set equal to the summation of the detection limit for each compound and a certain ratio of its concentration. This ratio was selected to be 0.05 for this study, where data below the detection limit were replaced with half of the detection limit and their uncertainties were replaced

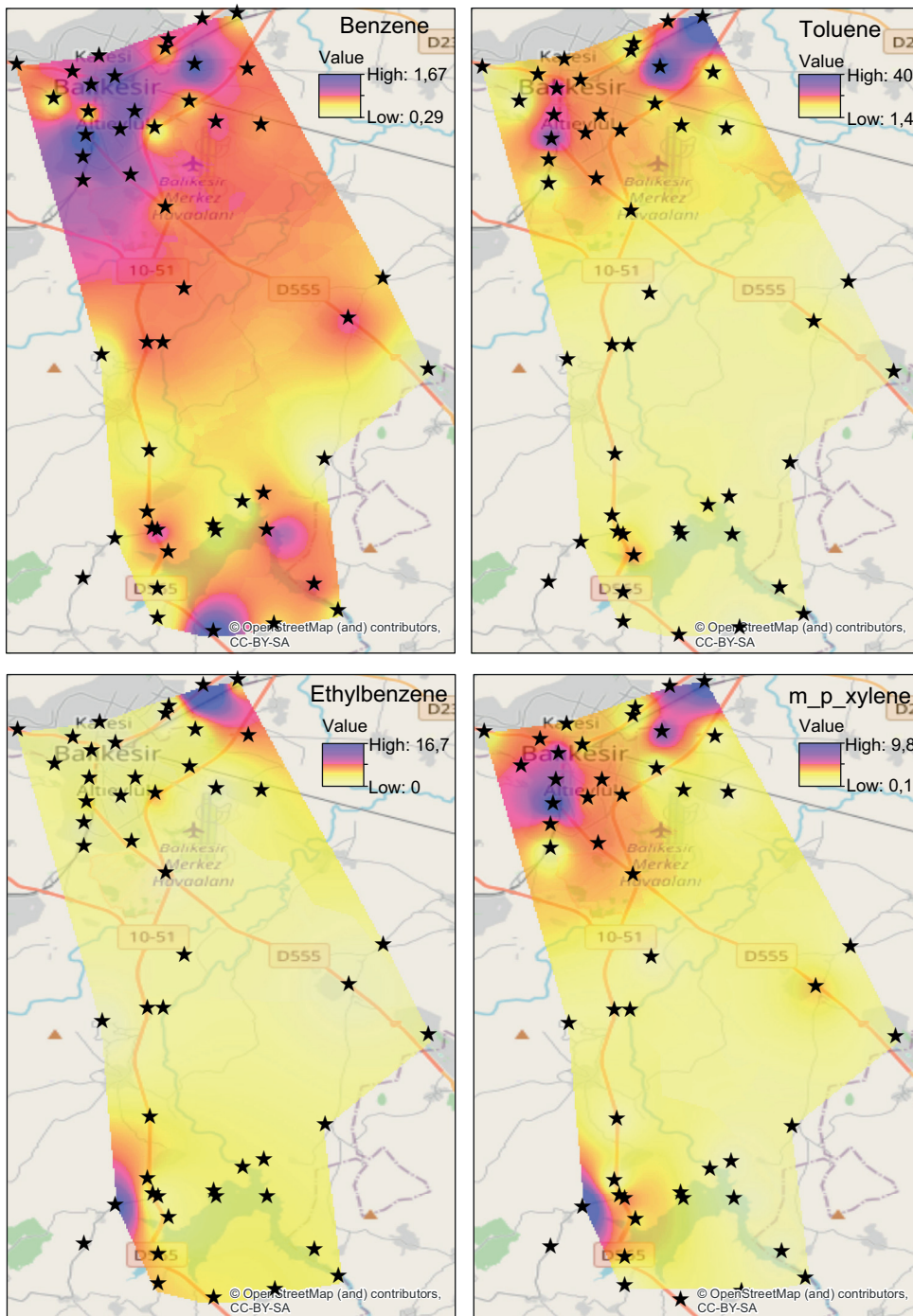


Fig. 3. Pollution maps of the benzene, toluene, ethylbenzene and xylene (BTEX) group for the summer season ($\mu\text{g m}^{-3}$).

with 5/6 of their detection limits. On the other hand, missing values were replaced with the geometric mean of data and their uncertainties were replaced with 5/6 of the detection limits (Polissar et al., 2001).

To determine the exact number of sources, three main criteria were applied (Zhao et al., 2004). In the first step, numbers of factors where Q values did not change significantly were determined. In the second

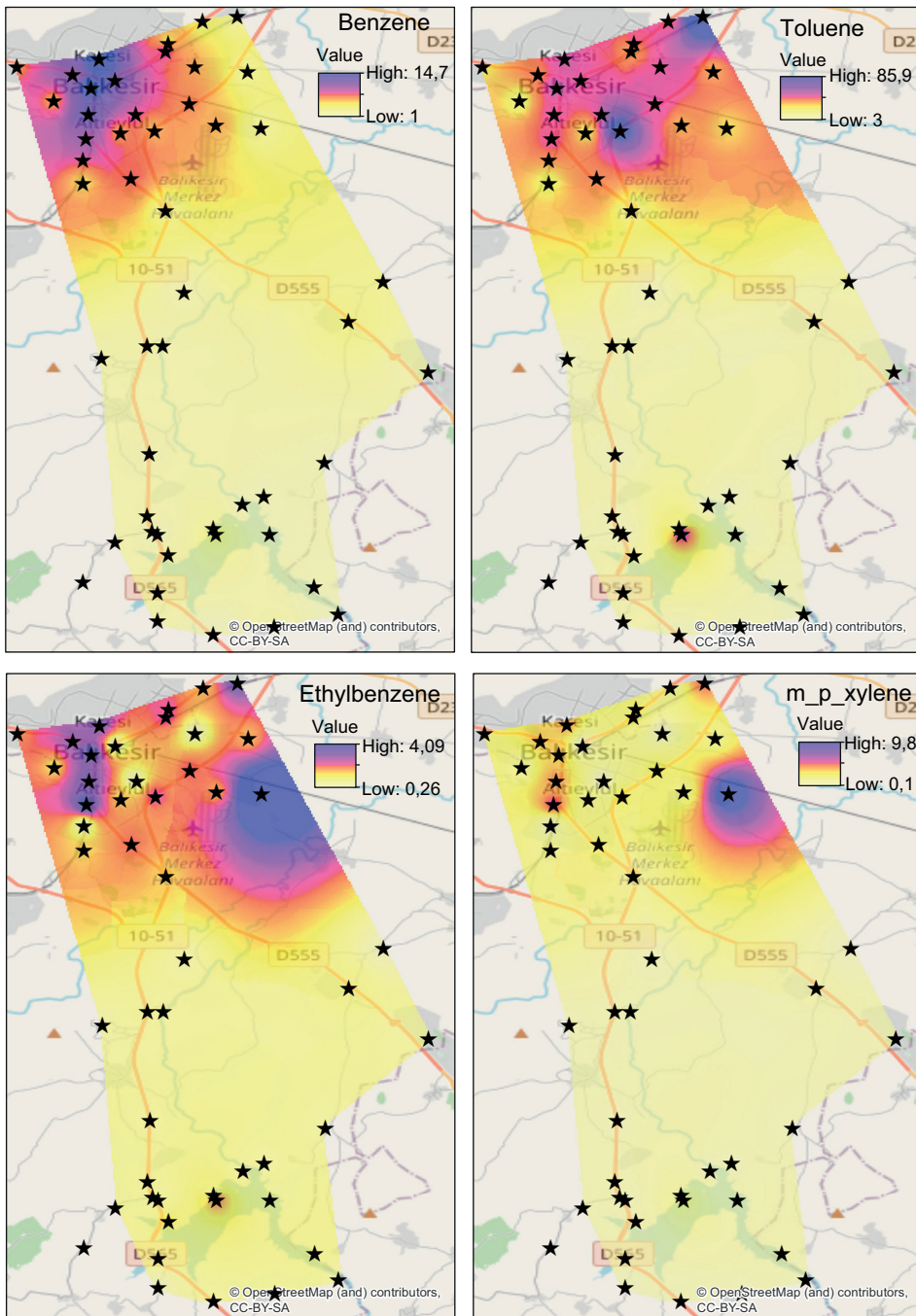


Fig. 4. Pollution maps of the BTEX group for the winter season ($\mu\text{g m}^{-3}$)

step, various force peak values (F_{peak}) between -2 and $+2$ were also tried. F_{peak} values affect the autocorrelation between factors. Accordingly, by using different F_{peak} values, oblique edges were examined; given that the Q value did not change

significantly, the optimum F_{peak} value was selected as -0.1 . In the third step, scaled residuals were investigated. More than the 99% of the scaled residuals for target compounds were found to be within ± 2 around the mean value. Finally, the interpretability

Table IV. Median and mean concentrations of measured VOCs at residential, traffic and background stations ($\mu\text{g m}^{-3}$).

Compounds	Residential		Traffic		Background	
	Mean	Median	Mean	Median	Mean	Median
n-hexane	1.63	0.85	0.87	0.59	0.72	0.42
methylcyclopentane	1.14	1.09	0.68	0.54	0.61	0.34
Benzene	4.98	4.64	2.11	1.96	1.82	1.52
cyclohexane	1.11	1.01	0.97	0.89	0.89	0.79
2-m-hexane	1.95	1.73	1.15	1.09	0.97	0.80
3-m-hexane	1.01	0.94	0.58	0.54	0.60	0.53
c-3-heptane	0.24	0.21	0.14	0.13	0.13	0.11
methylcyclohexane	0.22	0.18	0.13	0.12	0.12	0.10
Toluene	17.1	17.8	13.9	6.51	6.20	3.37
Octane	1.08	0.99	0.48	0.61	0.65	0.48
ethylbenzene	1.56	1.28	0.99	0.52	0.67	0.25
m,p-xylene	6.27	5.22	3.92	2.55	2.43	0.84
Styrene	2.35	1.95	1.53	0.93	1.66	1.03
o-xylene	1.22	1.09	0.69	0.34	0.37	0.23
Nonane	0.96	0.96	1.03	0.99	0.63	0.50
n-propylbenzene	1.99	1.69	2.27	1.13	1.74	1.08
Camphene	4.04	3.09	2.33	2.21	2.67	2.11
1-decene	2.40	2.13	2.13	1.95	1.98	1.75
1,2,4-trimethylbenzene	0.70	0.63	1.22	0.82	1.01	0.75
n-decane	0.45	0.39	0.19	0.18	0.19	0.16
benzylchloride	1.14	1.15	0.61	0.51	0.76	0.37
1,2,3-trimethylbenzene	0.45	0.42	0.21	0.23	0.31	0.23
1-undecene	3.87	2.94	3.15	1.84	2.52	1.81
1,2,4-trichlorobenzene	10.7	6.54	19.1	7.55	6.44	6.41
Naphthalene	1.57	1.35	0.71	0.64	0.78	0.66

of the retained factor compositions was also investigated (Xie and Berkowitz, 2006). Additionally, 5% extra modeling uncertainty was selected. The models were run 20 times with the five factors and all runs were converged. The Q(robust) was within 1.03% of the Q(true). Therefore, outliers did not significantly affect the Q value. Finally, five factors were obtained as a result of the PMF analysis. The factor loadings and fractions of VOC concentrations accounted for by each factor are given in Figures 5 and 6, respectively.

Factor 1 is dominated by bromoform. It accounts for approximately 80% of the measured bromoform concentration. We measured relatively high bromoform concentrations at sampling locations close to the Balikesir drinking water treatment plant. Since bromoform is a marker for water chlorination (Carpenter et al., 2005, 2007), factor 1, which accounts for

12.60% of the total VOC concentration was attributed to emissions from the Balikesir water treatment plant.

Factor 2 accounted for > 80% of the concentration of 1,2,4-trichlorobenzene and about 30% of the concentration of 1-octene, octane, nonane and tert-butylbenzene. The contribution of this factor was high in agricultural fields both around the lake and the Izmir highway. 1,2,4-trichlorobenzene is used as an herbicide intermediate and insecticide (Ramamoorthy and Ramamoorthy, 1997; Sullivan and Krieger, 2001). Diesel contains nonane and octane (Wang 2014). Therefore, factor 2 which explains 22.17% of the total VOC load, was identified as an herbicide and/or insecticide used in agricultural activities mixed with diesel exhaust.

Factor 3 explains > 50% of the toluene concentration. This factor also accounts for approximately

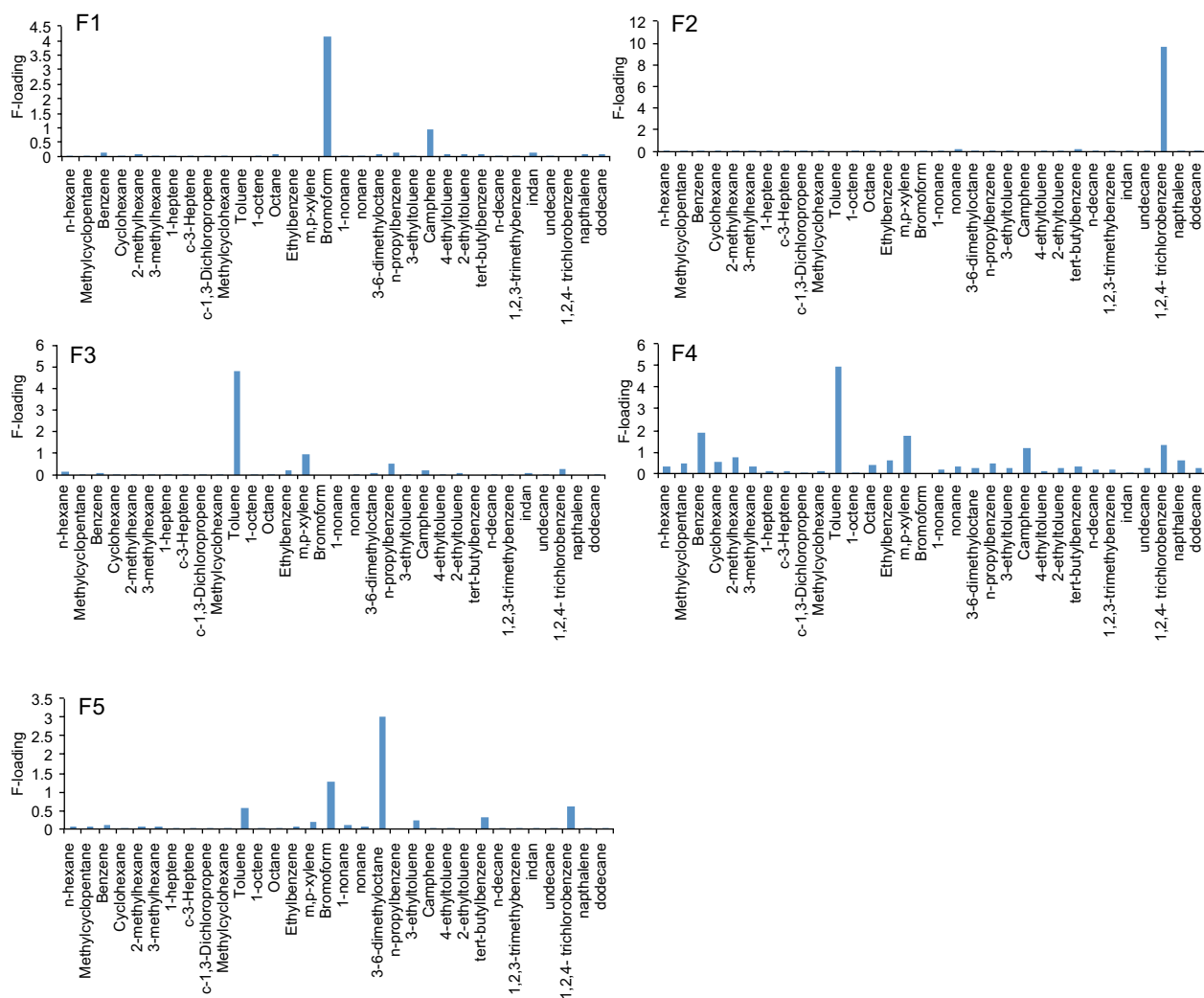


Fig. 5. Factor loadings.

40% of the n-propylbenzene concentration, and > 30% of ethylbenzene and m,p-xylene concentrations. Toluene, ethylbenzene and m,p-xylene, which are known as the TEX group, are good markers for solvent usage, paints and industrial coatings (Yuan et al., 2009; Guo et al., 2011; Zhang et al., 2013; Sarkar et al., 2014). High scores of factor 3 were found around a small industrial zone located in the northeastern part of the city. Factor 3, which explains 15.33% of the total VOC concentration, was associated with solvent use related with industrial activities.

Factor 4 was identified as mixed traffic exhaust, because it comprised both aromatic hydrocarbons including benzene, toluene, ethylbenzene, xylene,

naphthalene, which are good markers for light-duty vehicle emissions (Guo et al., 2011; Wu et al., 2016), and heavy alkanes/alkenes, such as n-hexane, methylcyclopentane, 2-methylhexane, 3-methylhexane, methylcyclohexane, nonane, 1,2,3-trimethylbenzene, n-decane, undecane and dodecane, which are indicators of diesel exhaust (Yuan et al., 2009; Wu et al., 2016). Furthermore, the highest factor 4 scores were observed in the city center and around the Balikesir-Izmir highway in the lake area. The factor accounted for approximately 36% of the total VOC concentration.

Factor 5 explained about 14% of the total variance, accounted for > 80% of the 3,6-dimethyloctane

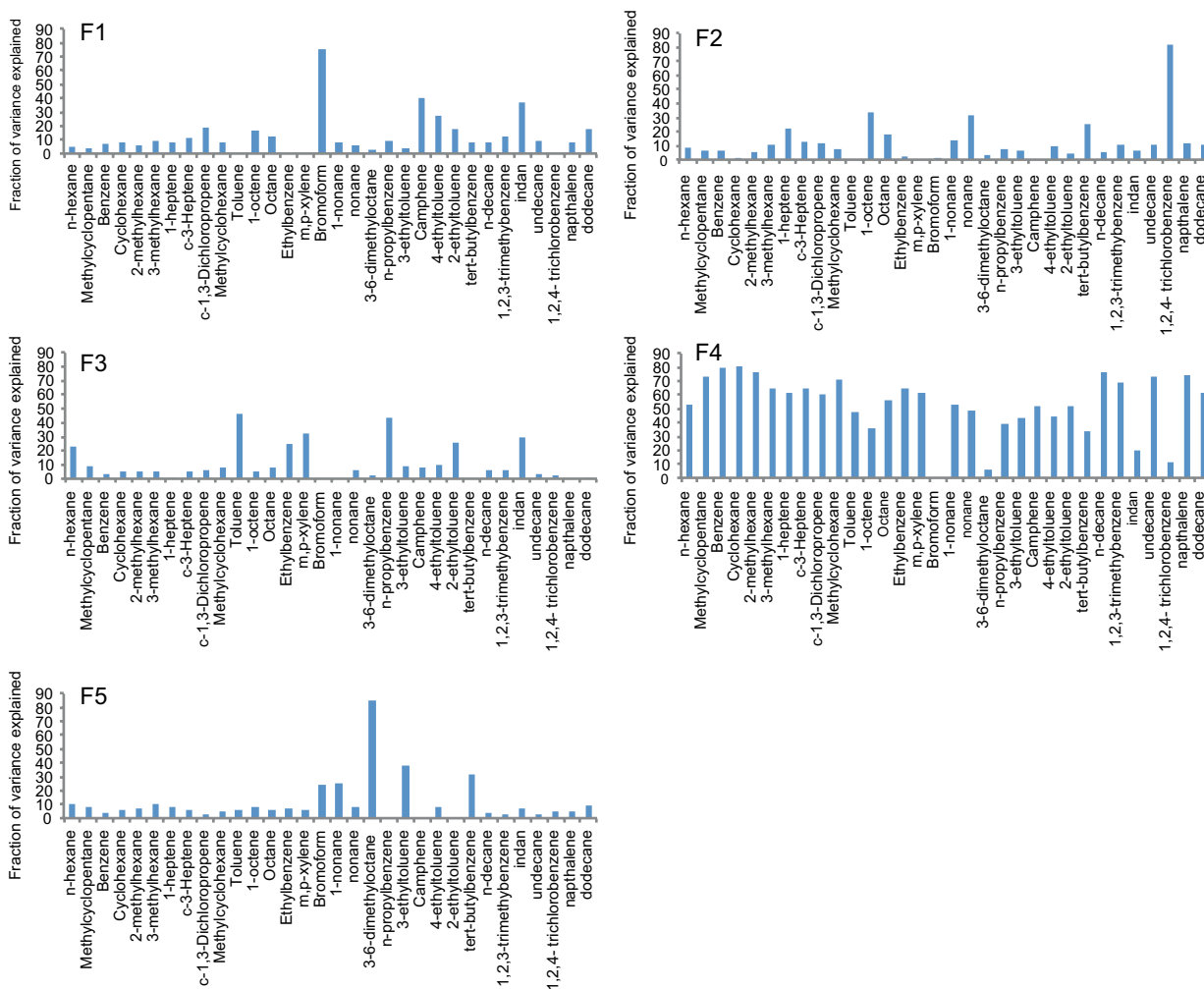


Fig. 6. Explained variances.

concentration and >20% of the concentrations of 1-nonane, 3-ethyltoluene and tert-butylbenzene. The highest scores of this last factor were found around roads and at residential areas. We believe that factor 5 represents mixed urban emissions (or urban plume).

4. Conclusions

The ambient levels and spatial distributions of 25 target VOCs were measured in an urban area at 50 stations during two sampling campaigns performed in March and August 2010.

The most abundant species was found to be toluene, with an average concentration of 15.8 and 6.00 $\mu\text{g m}^{-3}$ in winter and summer, respectively, which was measured in 100% of the sampling points. The only

other compound found in all the sampling stations was benzene, which had a concentration of 4.50 and 0.79 $\mu\text{g m}^{-3}$ in winter and summer, respectively. The BTEX compounds in addition to 1,2,4-trichlorobenzene were accounted for around 57% of the total amount of VOCs in winter but in summer the ratio decreases to 52%.

To identify the sources of VOCs in the atmosphere of Balikesir, a PMF analysis was also performed. Traffic was found to be the most dominant source accounting for 36.22% of the system variance. On the other hand, the contribution of the industrial activities to the total VOC load of the city was also found to be significant (29%). Therefore, it can be concluded that even industrial activities in a small city can be important to the total VOC load of the urban

atmosphere. Furthermore, since factors associated with agriculture and traffic have higher scores at sampling points located around the lake, one can argue these sources can have an effect on water quality. Consequently, the activities (i.e., traffic, agricultural and recreational activities) around the reservoirs should be carefully examined in terms of VOC pollution and necessary precautions should be taken in order to protect water quality.

Acknowledgments

This study was supported by Turkish Scientific and Technological Research Council (TÜBİTAK) with project number 108Y166.

References

- Al-Harbi M. 2019. Characteristic of atmospheric BTEX concentrations and their health implications in urban environment. *Applied Ecology and Environmental Research* 17:33-51. https://doi.org/10.15666/aecer/1701_033051
- Artun GK, Polat N, Yay OD, Üzmez ÖÖ, Arı A., Tuna GT, Elbir T, Altuğ H, Dumanoglu Y, Döğeroğlu T, Dawood A, Gaga EO. 2017. An integrative approach for determination of air pollution and its health effects in a coal fired power plant area by passive sampling. *Atmospheric Environment* 150:331-345. <https://doi.org/10.1016/j.atmosenv.2016.11.025>
- Cai C, Geng F, Tie X, Yu Q, An J. 2010. Characteristics and source apportionment of VOCs measured in Shanghai, China. *Atmospheric Environment* 44:5005-5014. <https://doi.org/10.1016/j.atmosenv.2010.07.059>
- Carpenter LJ, Wevill DJ, O'Doherty S, Spain G, Simmonds PG. 2005. Atmospheric bromoform at Mace Head, Ireland: Seasonality and evidence for a peatland source. *Atmospheric Chemistry and Physics* 5:927-2934. <https://doi.org/10.5194/acp-5-2927-2005>
- Carpenter LJ, Wevil DJ, Hopkins JR, Dunk RM, Jones CE, Hornby KE, McQuaid JB. 2007. Bromoform in tropical Atlantic air from 25°N to 25°S. *Geophysical Research Letters* 34, L11810. <https://doi.org/10.1029/2007GL029893>
- Cetin E, Odabasi M, Seyfioglu R. 2003. Ambient volatile organic compound (VOC) concentrations around a petrochemical complex and a petroleum refinery. *Science of the Total Environment* 312:103-112. [https://doi.org/10.1016/S0048-9697\(03\)00197-9](https://doi.org/10.1016/S0048-9697(03)00197-9)
- Civan MY. 2010. Spatial distribution of organic pollutants in Bursa atmosphere: Seasonality and health effects. Ph.D. thesis, Middle East Technical University, Ankara, Turkey, 358 pp.
- Civan MY, Kuntasal ÖO, Tuncel G. 2011. Source apportionment of ambient volatile organic compounds in Bursa, a heavily industrialized city in Turkey. *Environmental Forensics* 12:357-370. <https://doi.org/10.1080/15275922.2011.622345>
- Civan MY, Elbir T, Seyfioglu R, Kuntasal TO, Bayram A, Doğan G, Yurdakul S, Andiç Ö, Müezzinoğlu A, Sofuoğlu CS, Pekey H, Pekey B, Bozlaker A, Odabaşı M, Tuncel G. 2015. Spatial and temporal variations in atmospheric VOCs, NO₂, SO₂, and O₃ concentrations at a heavily industrialized region in western Turkey, and assessment of the carcinogenic risk levels of benzene. *Atmospheric Environment* 103:102-113. <https://doi.org/10.1016/j.atmosenv.2014.12.031>
- Demir S, Saral A, Işık D, Akyıldız A, Kuzu L, Mert S, Demir G, Goncaloglu BI. 2011. Characterization of ambient volatile organic compounds and their diurnal variations in İstanbul, Turkey. *Fresenius Environmental Bulletin* 20:2951-2958. <https://doi.org/10.5194/acp-15-7945-2015>
- Demirel G, Özden Ö, Döğeroğlu T, Gaga E. 2014. Personal exposure of primary school children to BTEX, NO₂ and ozone in Eskişehir, Turkey: Relationship with indoor/outdoor concentrations and risk assessment. *Science of the Total Environment* 473-474:537-548. <https://doi.org/10.1016/j.scitotenv.2013.12.034>
- Elbir T, Cetin B, Cetin E, Bayram A, Odabasi M. 2007. Characterization of volatile organic compounds (VOCs) and their sources in the air of Izmir, Turkey. *Environmental Monitoring and Assessment* 133:149-160. <https://doi.org/10.1007/s10661-006-9568-z>
- Filella I, Peñuelas J. 2006. Daily, weekly and seasonal time course of VOC concentrations in a semi-urban area near Barcelona. *Atmospheric Environment* 40: 7752-7769. <https://doi.org/10.1016/j.atmosenv.2006.08.002>
- Guo H, Cheng HR, Louie PKK, Ayoko GA. 2011. Which emission sources are responsible for the volatile organic compounds in the atmosphere of Pearl River Delta? *Journal of Hazardous Materials* 188:116-124. <https://doi.org/10.1016/j.jhazmat.2011.01.081>
- Im U, Tayanc M, Yenigün O. 2008. Interaction patterns of major photochemical pollutants in Istanbul, Turkey. *Atmospheric Research* 89, 4:382-390. <https://doi.org/10.1016/j.atmosres.2008.03.015>

- Jones G, Gonzalez-Flesca N, Sokhi RS, McDonald T, Ma M. 1998. Measurement and Interpretation of Concentrations of Urban Atmospheric Organic Compounds. In: Urban air quality: Monitoring and modeling (Sokhi RS, Ed.). Springer, Dordrecht, 107-121.
- Kara G, Aydin ME. 2013. Vehicle related VOCs in parking garage in Konya/Turkey. *Journal of Selçuk University. Natural and Applied Science* 2, 4:56-66.
- Kim KH, Jahan SH, Kabir E. 2012. A review on human health perspective of air pollution with respect to allergies and asthma. *Environment International* 59:41-52. <https://doi.org/10.1016/j.envint.2013.05.007>
- Kuntasal ÖO. 2005. Temporal variations and sources of organic pollutants in two urban atmospheres: Ankara and Ottawa. Ph.D. thesis, Middle East Technical University. Ankara, Turkey, 399 pp.
- Kuntasal ÖO, Kilavuz SA, Karman D, Wang D, Tuncel G. 2013. C5-C12 volatile organic compounds at roadside, residential, and background locations in Ankara, Turkey: Temporal and spatial variations and sources. *Journal of the Air and Waste Management Association* 63:1148-1162. <https://doi.org/10.1080/10962247.2013.804012>
- Miller L, Xu X, Wheeler A, Atari DO, Grgicak-Mannion A, Luginaah I. 2011. Spatial variability and application of ratios between BTEX in two Canadian cities. *The Scientific World Journal* 11:2536-2549. <https://doi.org/10.1100/2011/167973>
- Muezzinoglu A, Odabasi M, Onat L. 2001. Volatile organic compounds in the air of Izmir, Turkey. *Atmospheric Environment* 35, 753-760. [https://doi.org/10.1016/S1352-2310\(00\)00420-9](https://doi.org/10.1016/S1352-2310(00)00420-9)
- Ojiodu CC, Uwadia NO. 2013. Temporal and spatial variability of ambient volatile organic compounds (VOCs) pollution in Ilupeju industrial areas of Lagos State, southwestern Nigeria. *Journal of Emerging Trends in Engineering and Applied Sciences* 4:545-551.
- Özden Ö, Döğeroğlu T, Kara S. 2008. Assessment of ambient air quality in Eskişehir, Turkey. *Environment International* 34:678-687. <https://doi.org/10.1016/j.envint.2007.12.016>
- Öztürk N, Ergenekon P, Seçkin GÖ, Bayır S. 2015. Spatial distribution and temporal trends of VOCs in a highly industrialized town in Turkey. *Bulletin of Environmental Contamination and Toxicology* 94:653-660. <https://doi.org/10.1007/s00128-015-1506-8>
- Parra MA, Elustondo D, Bermejo R, Santamaría JM. 2009. Ambient air levels of volatile organic compounds (VOC) and nitrogen dioxide (NO₂) in a medium size city in northern Spain. *Science of the Total Environment* 407:999-1009. <https://doi.org/10.1016/j.scitotenv.2008.10.032>
- Parao AE. 2012. Volatile organic compounds in urban and industrial areas in the Philippines. M.Sc. thesis, Ghent University, Ghent, Belgium.
- Pekey H, Arslanbaş H. 2008. The relationship between indoor, outdoor and personal VOC concentrations in homes, offices and schools in the metropolitan region of Kocaeli, Turkey. *Water Air and Soil Pollution* 191:113-129. <https://doi.org/10.1007/s11270-007-9610-y>
- Pekey B, Yilmaz H. 2011. The use of passive sampling to monitor spatial trends of volatile organic compounds (VOCs) at an industrial city of Turkey. *Microchemical Journal* 97:213-219. <https://doi.org/10.1016/j.microc.2010.09.006>
- Pekey H, Pekey B, Arslanbas D, Bozkurt Z, Dogan G, Tuncel G. 2015. Source identification of volatile organic compounds and particulate matters in an urban and industrial areas of Turkey. *Ekoloji* 24:1-9. <https://doi.org/10.5053/ekoloji.2015.941>
- Pilidis GA, Karakitsios SP, Kassomenos PA. 2005. BTX measurements in a medium-sized European city. *Atmospheric Environment* 39:6051-6065. <https://doi.org/10.1016/j.atmosenv.2005.06.044>
- Polissar AV, Hopke PK, Poirot RL. 2001. Atmospheric aerosol over Vermont: Chemical composition and sources. *Environmental Science and Technology* 35:4604-4621. <https://doi.org/10.1021/es0105865>
- Qadoumi H. 2016. The source apportionment of volatile organic compounds on Sable Island. M.Sc. thesis, Dalhousie University, Nova Scotia, Canada, 139 pp.
- Ramamoorthy S, Ramamoorthy S. 1997. Chlorinated organic compounds in the environment. Regulatory and monitoring assessment. CRC Press, Boca Raton, Florida, 384 pp.
- Roukos J, Riffault V, Locoge N, Plaisance H. 2009. VOC in an urban and industrial harbor on the French North Sea coast during two contrasted meteorological situations. *Environmental Pollution* 157:3001-3009. <https://doi.org/10.1016/j.envpol.2009.05.059>
- Sarkar C, Chatterjee A, Majumdar D, Ghosh SK, Srivastava A, Raha S. 2014. Volatile organic compounds over Eastern Himalaya, India: Temporal variation and source characterization using positive matrix factorization. *Atmospheric Chemistry and Physics*

- Discussions 14:32133-32175. <https://doi.org/10.5194/acpd-14-32133-2014>
- Sullivan JB, Krieger GR. 2001. *Clinical and environmental health and toxic exposures*. 2nd ed. Lippincott Williams and Wilkins, Philadelphia, 1323 pp.
- Tağlı Ş. 2007. Tuzla çayı havzasında (biga yarımadası) cbs-tabanlı rusle modeli kullanarak arazi degradasyonu risk değerlendirmesi. *Ekoloji* 17:11-20.
- Toyoda Y, Takada T, Suzuki H. 2016. Halogenated hydrocarbon solvent-related cholangiocarcinoma risk: Biliary excretion of glutathione conjugates of 1,2-dichloropropane evidenced by untargeted metabolomics analysis. *Scientific Reports* 6, 24586. <https://doi.org/10.1038/srep24586>
- Wang X, Wu Z, Liang G. 2009. WRF/CHEM modeling of impacts of weather conditions modified by urban expansion on secondary organic aerosol formation over Pearl River Delta. *Particuology* 7:384-391. <https://doi.org/10.1016/j.partic.2009.04.007>
- Wang X. 2014. Analysis of ambient VOCs levels and potential sources in Windsor. M.Sc. thesis, University of Windsor, Ontario, Canada.
- Wu F, Yu Y, Sun J, Zhang J, Wang J, Tang G, Wang Y. 2016. Characteristics, source apportionment and reactivity of ambient volatile organic compounds at Dinghu Mountain in Guangdong Province, China. *Science of the Total Environment* 548-549:347-359. <https://doi.org/10.1016/j.scitotenv.2015.11.069>
- Xie Y, Berkowitz CM. 2006. The use of positive matrix factorization with conditional probability functions in air quality studies: An application to hydrocarbon emissions in Houston, Texas. *Atmospheric Environment* 40:3070-3091. <https://doi.org/10.1016/j.atmosenv.2005.12.065>
- Yuan Z, Lau AKH, Shao M, Louie PKK, Liu SC, Zhu T. 2009. Source analysis of volatile organic compounds by positive matrix factorization in urban and rural environments in Beijing. *Journal of Geophysical Research* 114, D2. <https://doi.org/10.1029/2008JD011190>
- Yurdakul S, Civan M, Kuntasal Ö, Doğan G, Pekey H, Tuncel G. 2017. Temporal variations of VOC concentrations in bursa atmosphere. *Atmospheric Pollutions and Research* 9:189-206. <https://doi.org/10.1016/j.apr.2017.09.004>
- Zhang J, Wang T, Chameides W, Cardelino C, Blake D, Streets D. 2008. Source characteristics of volatile organic compounds during high ozone episodes in Hong Kong, Southern China. *Atmospheric Chemistry and Physics* 8:4983-4996. <https://doi.org/10.5194/acp-8-4983-2008>
- Zhang Y, Wang X, Barletta B, Simpson IJ, Blake DR, Fu X, Zhang Z, He Q, Liu T, Zhao X, Ding X. 2013. Source attributions of hazardous aromatic hydrocarbons in urban, suburban and rural areas in the Pearl River Delta (PRD) region. *Journal of Hazardous Materials* 250-251:403-411. <https://doi.org/10.1016/j.jhazmat.2013.02.023>
- Zhao W, Hopke PK, Karl T. 2004. Source Identification of Volatile Organic Compounds in Houston, Texas. *Environmental Science and Technology* 38:1338-1347. <https://doi.org/10.1021/es034999c>